

Warm-Up Exercises

For use before Lesson 8.3, pages 398–402

Graph the equation.

1. $y = \frac{1}{2}x$
2. $y = x - 3$
3. $y = 5x - 2$
4. $y + 3x = 4$

Daily Homework Quiz

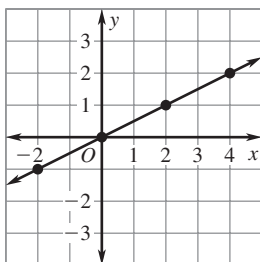
For use after Lesson 8.2, pages 391–397

1. Is $(2, -3)$ a solution of the equation $2x + y = 1$?
2. Write $2x + y = 1$ in function form.
3. Graph $x + 2y = 4$.
4. **Challenge** The graph of $y = x^2$ passes through $(-2, 4)$, $(-1, 1)$, $(0, 0)$, $(1, 1)$, and $(2, 4)$. Find five corresponding ordered pairs for the graph of $y = x^2 - 2$ and graph the curve.

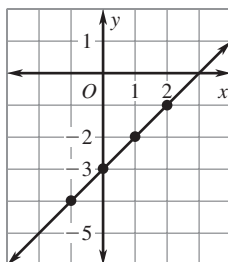
ANSWERS

Warm-Ups:

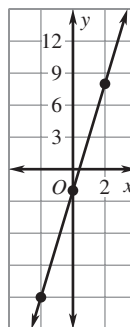
1.



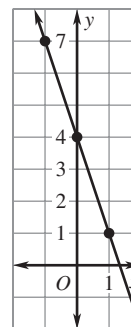
2.



3.



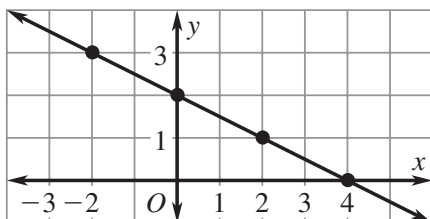
4.



Daily Homework Quiz:

1. yes
2. $y = -2x + 1$

3.



4.

